

UNDP-Gol Supported State Level Support to Livelihood Promotion Strategies Project

Annual Report-2010



**Jharkhand State Livelihood Promotion Society,
Rural Development Department, Govt. of Jharkhand**

3rd Floor, FFP, Building HEC Campus, Dhurwa, Ranchi-834004 Jharkhand,
Ph. 0651-2401782, 83. Tele Fax - 0651-2401782
Website- www.islps.in. Email- contact@islps.in



Contents

1. PROJECT BRIEF	3
1.1. Background	3
1.1.1. Data Sheet	4
1.1.2. Area.....	5
1.1.3. Partners.....	6
2. ORGANISATIONAL STRUCTURE	7
2.1. Governance Of Society (JSLPS).....	8
2.2. Governing Body (GB).....	8
2.3. Executive Committee (EC).....	9
2.4. Project Steering Committee (PSC) formed	10
2.5. State livelihood advisory Committee (SLAC).....	10
2.6. District Livelihood Facilitation committee (DLFC)	11
2.7. Operation Manual on HR & Finance	11
3. OUTPUTS	12
3.1. Project Output 1	12
Key Achievement	12
3.2. Project Output 2	12
Key Achievement	12
3.3. Project Output 3	14
Key Achievement	14
3.4. Project Output 4	14
Key Achievement	14
4. PHYSICAL PROGRESS.....	16
4.1. Agriculture	16
System of Rice Intensification (SRI)	16
Demonstration of Poly House Technology for Healthy Seedling Raising	16
Seed Production and Multiplication Program.....	17
4.2. Self- Help Group: Formation/Strengthen	17
Formation of New SHGs	17
Support to SHGs	17
Training for old and new SHGs Convened	17
Exposure Visits for SHGs.....	18
4.3. Vegetable Cultivation Based DRIP Irrigation System	18
Out Come.....	18
Institutional Arrangement for Demonstration:.....	18

Achievement	19
4.4. Livelihoods Orientation Training for Stakeholders Completed by Basix	19
4.5. Gramsabhas and Village Development Committee are re-energized	19
4.6. Farmers Groups	20
4.7. Forest Rights Committee	20
Training on Forest Rights Act 2006	20
4.8. Micro-Plan	20
State level training on Micro Planning	20
Village level Training & Preparation of Micro Plans	20
5. FINANCIAL PROGRESS	21
5.1. Budget	21
5.2. Financial Progress	21
6. PICTURE GALLERY	22

1. PROJECT BRIEF

1.1. BACKGROUND

The GOI and the UNDP have signed the new Country Program for year 2008-12, which is aligned with the priorities of the Eleventh Five Year Plan. It covers 7 states: Rajasthan, Madhya Pradesh, Chhattisgarh, Jharkhand, Orissa, Bihar and Uttar Pradesh. The Country Program is supporting initiatives in 5 focus areas: Poverty Reduction, HIV and Development, Democratic Governance, Energy and Environment and Disaster Risk Management.

The UNDP's Poverty Reduction Program assists National and State governments to implement inclusive poverty reduction program. It supports program, policies and partnerships that promote income opportunities for the poor people and helps them access financial products to protect these gains.

In partnership with the National Planning Commission, the program seeks to support state governments to design and implement livelihood strategies focusing on disadvantaged groups and regions.

The Rural Development Department (RD), Government of Jharkhand (GoJ) has signed the agreement on the annual work plan for the proposed project - State Level Support to Livelihood Promotion Strategies, and initiated the process to set up the project team as well as the Jharkhand State Livelihood Promotion Society (JSLPS) to collaborate with various government departments, NGOs/CBOs, Technical Institutions and Private sector.

A total of five districts have been selected that spread over all regions of Jharkhand comprising W. Singhbhum, Palamu, Ranchi, Hazaribag and Pakur. The project focuses on 2 blocks of each district as starting point and will expand over the project period until 2012.

The project endeavors to achieve following results for time duration from 2009 to 2012:

- Disadvantaged groups will have better awareness, access to their entitlements, and capacities to materialize their potentials of social and economic opportunities.
- At block and village level, capacity development of communities and their organizations/institutions, universalization of social mobilization will be promoted as foundation of sustainable livelihood promotion
- At district level, technical support provided by JSLPS to district collectors to identify livelihood intervention themes and areas with good analysis of market, institutions, value-chains and capacities of communities of disadvantaged groups.

- At state level, information sharing among various departments effectively facilitated by JSLPS to promote collaboration among departments.
- Monitoring systems & capacities strengthened to increase participation of and accrual of benefits for disadvantaged groups and regions: Through a central initiative across 7 UN focus states, including Jharkhand, a diagnosis of the M&E systems for selected poverty reduction/livelihood schemes at national, state and districts levels leading to development of an action plan for implementation in 2010.
- Effective models of livelihood vulnerability reducing strategies and instruments developed and demonstrated in selected districts.
- Increased opportunities created for diversifying livelihoods and skill development through engagement with private sector and integration with market. Integrated approach for livelihood promotion in selected sub-sectors demonstrated at cluster and district level involving private sector engagement.
- Evidence provided and feasible solutions suggested reflecting the voices and opinions of the poor and influence made on livelihood schemes/program and policies. Effective dialogue supported by JSLPS to ensure a deep understanding and knowledge sharing among livelihood promoters including the government, NGOs, communities of disadvantaged groups and private sector.

1.1.1. DATA SHEET

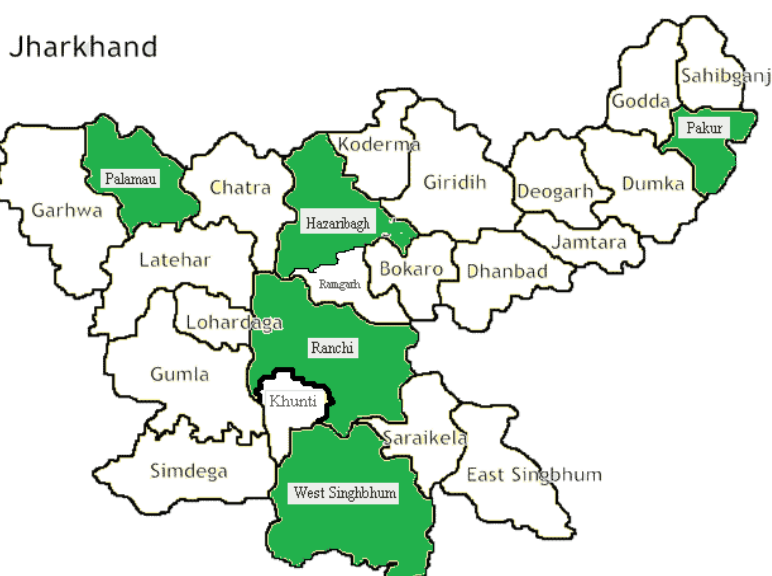
Title	Description
Project Title	State-Level Support to Livelihood Promotion Strategies -Jharkhand
Implementing Agency	Jharkhand State Livelihood Promotion Society, Rural Development Department, Govt. of Jharkhand
Funded By	United Nation Development Program - Poverty Unit
Award ID	00049804
Project ID	00074057
Project Start Date	July 1 st , 2009
Project End Date	December 31 st , 2012
Project Budget	USD 25,00,000

1.1.2. AREA

Jharkhand, with an area of 79,714 sq. km, 24 districts and 32,620 revenue villages, accounts for 2.4 per cent of the total geographical area of the country. With a population of 2.69 crore, the state accounts for 2.6 per cent of the total population of the country. The rural and urban population of the state accounts for 77.7 per cent and 22.3 per cent, respectively of the total population, as per 2001 census.

In spite of rich mineral and natural resources as well as many government schemes / program including on-going Tribal Sub-Plan and Watershed Mission, the challenges remain and thus, the large proportion of the population are still poor, particularly among STs and SCs. The poverty ratio among STs and SCs in rural areas is, in fact 54% and 57.5% respectively, and is higher than all India level.

Due to the importance of food security, agriculture, forestry and livestock for the poor in the state, the



project will focus its resources on these themes; however, relevant sectors and issues such as urban poverty, skill development and migration will be explored to support innovations and better livelihoods for the poor in other sectors.

The first year of project cycle (2009-2012), will focus on setting up the state and district/block team(s) and institution building process through involving the social mobilization agencies and capacity development of the community organizations aiming at building the foundation for the long-term development and

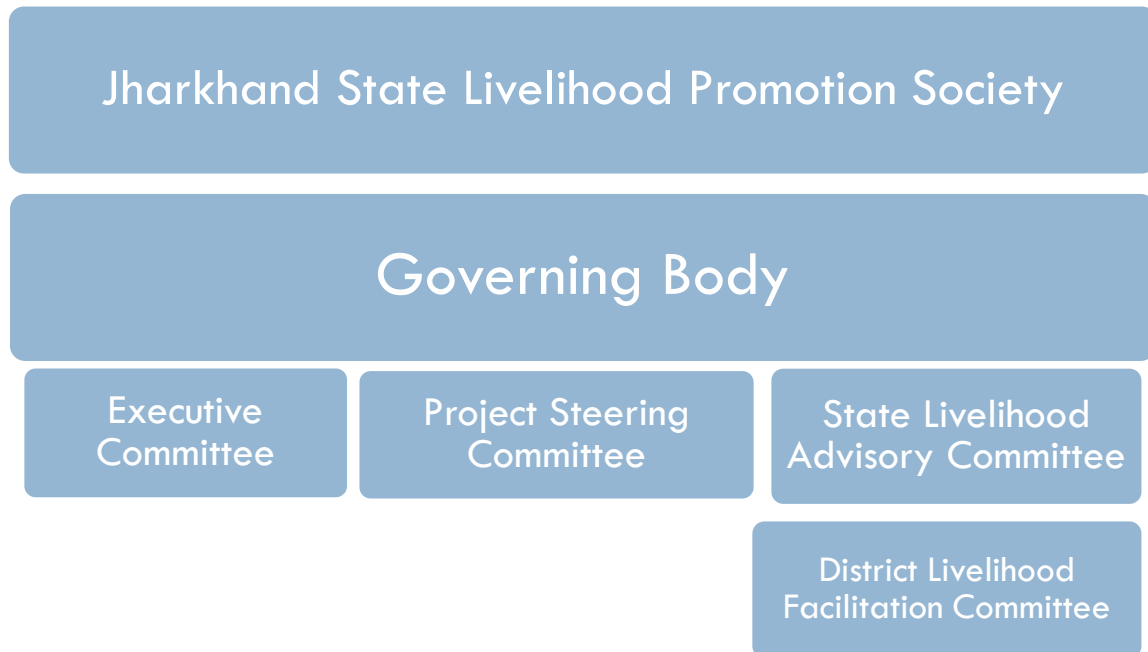
providing long-lasting impact for the poverty reduction in the state. The project will follow a holistic livelihood approach and will improve livelihood security and diversification of livelihoods among the poor in 477 villages of 5 districts - Ranchi, W. Singhbhum, Hazaribagh, Pakur and Palamu as a starting point.

1.1.3. PARTNERS

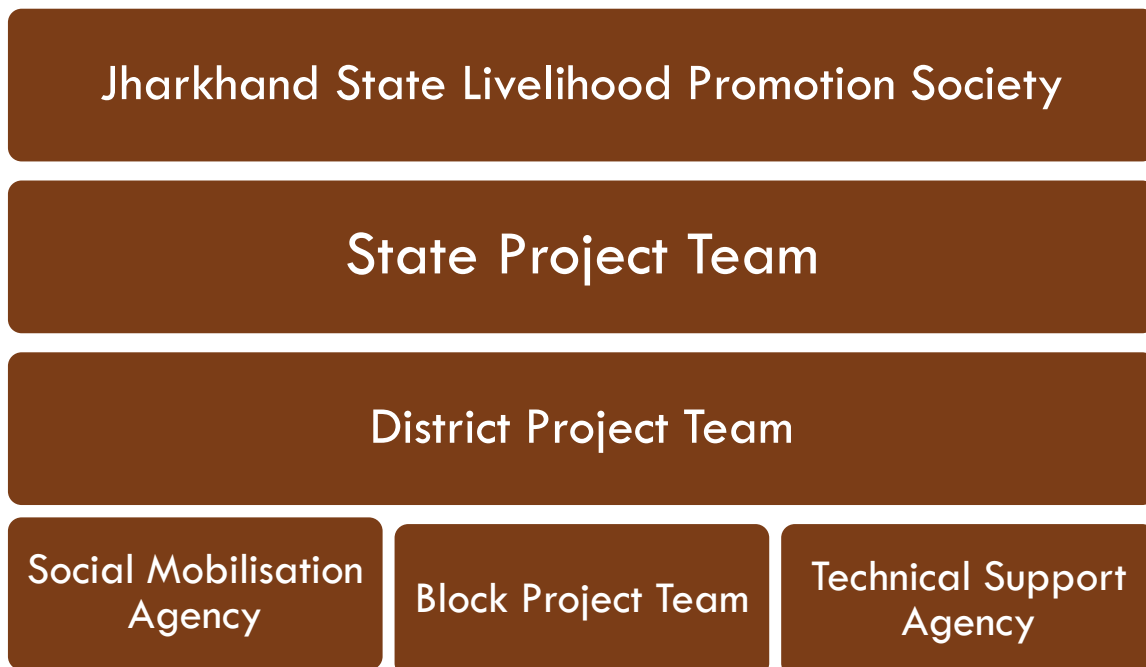
PARTNERS			
DISTRICT/ BLOCK	SOCIAL MOBILISATION	TECHNICAL SUPPORT	M& E Agency
W.Singhbhum			Sutra consulting Pvt. Ltd.
Bandgaon	Institute of Community Forest Governance	MART	
Goelkera			
Palamu			
Satbarwa	SPWD Consortium		
Bishrampur			
Hazaribagh			
Padma	PRADAN		
Barhi			
Pakur			
Pakuria	Nav Bharat Jagrti Kendra		
Maheshpur			
Ranchi			
Angara	Nav Bharat Jagrti Kendra	Gramin Vikas Trust	
Namkum	Karra Society Rural Action		

2. ORGANISATIONAL STRUCTURE

A. Governance Structure of Society



B. Operational Structure of Society



2.1. GOVERNANCE OF SOCIETY (JSLPS)

Jharkhand State Livelihood Promotion Society (JSLPS) got registered as an autonomous society on July 17th 2009 under Society Registration Act 1860 .The society works under aegis of Rural Development Department, Government of Jharkhand. The society is now fully operational. All the district level government officers have been officially informed regarding role and responsibilities of the society and they have been further requested to extend cooperation to society's office bearers at district level.

The necessary statutory documents like "bye-laws", "Operational Manual", "memorandum of association" have been prepared in both English and Hindi.

2.2. GOVERNING BODY (GB)

Society envisages that the business of the society, as per its aims and objectives, shall be managed and carried out by the GB.

GB comprises the following:

- Chairperson: Development Commissioner, Jharkhand (ex-officio)
- Ex-officio Members: Principal Secretaries/ Secretaries of the following State Government Departments: Rural Development (President); Agriculture and Sugarcane Development; Animal Husbandry and Fisheries; Cooperative; Food, Public Distribution and Consumer Affairs; Forest and Environment; Finance; Labor, Employment and Training; Panchayati Raj; and, Welfare; and the Joint Project Director (JPD), Livelihood Promotion Project, RDD
- Nominated Members: Up to three representatives of project non-government organizations (NGOs) and any other project non-officials not exceeding three or as desired by the Chairperson; there is a provision for special invitees to GB

Functions of GB:

- Providing overall policy guidance and direction for efficient functioning of the Society and bringing about strategic and policy changes that may be necessary for the support of projects assigned to the Society by the State Government
- Reviewing project performance and securing active involvement and participation of institutions, NGOs, voluntary agencies and individuals committed to poverty alleviation and providing necessary financial assistance to them
- Bringing about effective decentralization in basic planning for poverty alleviation by involvement of the people through a process of training and awareness building and creation and/ or utilization of structures, formal or otherwise

- Securing constructive and participatory involvement of local people and grass root-level leadership for the achievement of project objectives and, for this purpose, establishing and/ or utilizing formal as well as informal structures
- Considering and approving the balance sheet and annual audited accounts of the Society as presented by the President
- Considering the annual report and ratifying budgets
- Considering evaluation and special reports commissioned by the project administration
- Ensuring that the Society considers any comments made by funding agencies on the progress and requirement in the implementation of Project sponsored and funded by them
- Ensure technical and non-technical resources by harnessing the existing institutions and establishing new ones, if required
- Advising on the organization of conferences, symposia, workshops, etc. on matters related to the Society and to its projects
- Advising the State Government in implementation of poverty alleviation program
- Undertake all activities necessary for the fulfillment of the objective of the Society
- Expand/ modify the strength of its membership
- Add, modify or amend the Memorandum and Articles of Association and bye laws, provided that all such additions, modifications or amendments are aimed at promoting the objectives of the Society

2.3. EXECUTIVE COMMITTEE (EC)

EC comprises the following:

- Principal Secretary/ Secretary, RDD, GoJ (President)
- JPD, Livelihood Promotion, RDD, GoJ (Vice- President)
- Commissioner, National Rural Employment Guarantee Scheme (NREGS) (Member)
- Tribal Welfare Commissioner, GoJ (Member)
- Director, Panchayati Raj, GoJ (Member)
- OiC, Watershed Program, RDD, GoJ (Member)
- Representative, Finance Department, GoJ/ Internal Financial Advisor (Member)
- Principal Chief Conservator of Forest, GoJ (Member)
- Director, Agriculture/ Soil Conservation, GoJ (Member)
- Representative, Department of Land Resources (DoLR), GoJ (Member)
- Chief General Manager, NABARD (Member)
- State Project Manager, JSLPS (Member)
- All Members of the State Livelihood Advisory Committee (SLAC)

The EC is also envisaged to ensure that the Society considers any comments made by funding agencies on the progress and requirement in the implementation of projects sponsored and funded by them.

2.4. PROJECT STEERING COMMITTEE (PSC) FORMED

A five members Project Steering Committee has been formed. The committee meets once in a quarter.

The PSC under the chairmanship of Secretary RDD is comprised of the following members Special Secretary- Rural Development, Commissioner NREGA, Program Officer UNDP, and Project Manager- "State-Level Support to Livelihood Promotion Strategies - Jharkhand".

2.5. STATE LIVELIHOOD ADVISORY COMMITTEE (SLAC)

As envisaged in AWP 2009, an advisory group named " State Livelihood Advisory Committee"(SLAC) got constituted under Jharkhand State Livelihood Promotion Society (JSLPS) .The group extends cooperation to the project by providing expertise on livelihood matters. The SLAC will meet at least once in a quarter. The formation SLAC has been ratified by the Executive Committee of the society.

The SLAC comprised of seven members representing different segments/disciplines of livelihoods. The



members were; Dr. H.N Panda, RBI, Ranchi, Mr. M.V. Ashok, NABARD, Ranchi, Mr. Haribansh, Prabhat Khabar, Swami Shashankananda, RKM, Ranchi, Swami, Samaranand, Yogda Satsang Math, Ranchi, Prof Hareshwar Dayal, IHD, Ranchi, Mr, Radhika Borde, Researcher, Ms. Mahua Mannjhi, social activist, Satabrata Acharya- PRADAN(NGO); Mr. Sanjay Basu Malik, Institute of Community Forest Governance (NGO); Prof.(.Dr.) Ramesh Sharan, Department of Economics, Ranchi University; Dr. Ramdayal Munda- Member Rajya

Sabha, Ranchi University; Dr. Amrita Patel, Gender Specialist, the Utkal University, Orissa; Prof (Retired) Radha Mohan, (Ex-Information Commissioner, Orissa); Professor, Dr. Anirudh Prasad, Department of Rural Development, XISS

Due representation has been given to woman candidate. Mrs. (Dr.) Amrita Patel, a reputed Gender Specialist has made member of the Group

The key role of the SLAC:

1. Suggest state government in better design of poverty reduction program.
2. Evidence based advocacy for policy change which is pro-poor and congenial for inclusive growth
3. Identify the bottlenecks in the ongoing development program and action for corrective measures
4. Set a long term vision for the JSLPS and support to develop it as a nodal agency within RDD to support the quality implementation, monitoring and piloting of the different innovative livelihood models

2.6. DISTRICT LIVELIHOOD FACILITATION COMMITTEE (DLFC)

Similarly efforts were taken to organise DLFC at district level with resource person available in the district or nearby. Four out of five districts (except Ranchi) have created these DLFCs and they are working as a support group/think tank for the district team.

The key role of DLFC

1. Support JSLPS district team to better implement project through convergence efforts.
2. Create an enabling environment for pro-poor and inclusive growth
3. Livelihood model demonstration

2.7. OPERATION MANUAL ON HR & FINANCE

A Detailed document on HR & Finance has been approved by Executive Committee in the month of December'2009 and functioning at ground level.

3. OUTPUTS

3.1. PROJECT OUTPUT 1

The governments' capacities and coordination mechanisms strengthened at state and district level for designing and implementing livelihood strategies for disadvantaged groups and regions

Key Achievement

- 298 Village level Micro Plan completed with support of SMAs and district & block team of JSLPS for creating appropriate livelihood strategies for disadvantaged and marginalized group.
- District Livelihood Facilitation Committee formed and meeting organized in all the 5 project districts
- JSLPS is supporting state government for grounding of National Rural Livelihood Mission in State through organizing a core committee for NRLM and participating in state and national level consultations on implementation, guidelines formulation and allied activities.
- JSLPS also taken steps for unfolding financial inclusion project in one of its project district Pakur in association with NABARD, Vananchal Gramin Bank and UNDP.
- JSLPS supported Rural Development Department for piloting of BPL Survey and allied PRA exercise in 4 districts of Jharkhand.
- JSLPS has also organized **“State Level Consultation on Skill Development of Rural Youth through RSETIs”** and Coordinated **“Multi State Special SGSY Program on Skill Promotion of MoRD Govt. of India.**
- Convergence efforts made for flagship program like MGNREGA, SGSY and BRGF at district level for program quality improvement & enhancing the reach to the targeted community. This created demand for 48 ponds and 330 wells under MGNREGA and it is successfully implemented in 5 districts of the Project.



3.2. PROJECT OUTPUT 2

Effective livelihood models developed that reduce the vulnerabilities of disadvantaged groups in the long-term

Key Achievement

- Promotion of new Micro Drip Irrigation technology for vegetable cultivation and Poly House based nursery seedling raising in soil less medium adopted in project area



- This poly nursery is managed by a group of 10 women SHG members and they are running this as an exclusive enterprise. The total yearly production of this poly nursery was around 4.00 lacs of seedlings and it generated Rs. 2.00 lacs income for the group.

40 agro-horticulture Wadi model promoted in Ranchi district. 3500 plants of mango grafts purchased from W. Bengal and planted. The beneficiaries were also imparted training on plantation, staking and their management.

- Promotion of Goat Rearing among 300 farmers of Ranchi and Palamu designed to be implemented through Joint Liability Groups (JLG) and their federation with supplementary feed, vaccination, insurance and buy back arrangement support on PPCP mode.
- Revival and promotion of Lac Cultivation with 200 farmers in Satbarwa block of Palamu district has been taken with technical support of IINRG (Previously known as ILRI). Quality Brood Lac for inoculation in Palash trees was supported by project in 4000 plants and this will be further supplied as inoculation material to other Lac growers in March 2011.
- At Hazaribagh district 40 poultry shed has been linked with market and 10 SHGs were given training on poultry management. This resulted in a total of 299 tons poultry produce which provided net benefit of Rs. 12.70 lacs. Each member's income increased by Rs. 2500/- to Rs. 8000/- per poultry cycle by linking with Damodar Poultry Producer Company.
- Similarly, 117 families linked with Tasser spinning and each member earned additional income of Rs. 1000/- per month.
- Market linkages process initiated for Char, Guthli, Karanj Seed and Mahua Flower in W. Singhbhum

district through SHGs. They successfully experimented collective marketing and earned marginal profits and also planning to execute collective marketing on a larger scale.



Project initiated training of 30 village resource persons for developing them as Marketing Cadre in W. Singhbhum district. They were oriented on Collective Marketing aspects and various activities related to infrastructure development in the villages. The training was also given on process of oil extraction through the usage of manual oil expellers.

- Project initiated training of 30 village resource persons for developing them as Marketing Cadre in W. Singhbhum district. They were oriented on Collective Marketing aspects and various activities related to infrastructure development in the villages. The training was also

- Digital and Manual weighing scales were provided in selected villages of W. Singhbhum to avoid cheating by middle man, traders and vendors associated with NTFP collection and procurement
- A total of 5673 KG seeds have been distributed to 1167 farmers for second crop in paddy fellow land at Ranchi district.

3.3. PROJECT OUTPUT 3

Partnerships established among communities, CBOs, private sector, technical institutions and government for diversifying livelihoods and skill development

Key Achievement

- To support Govt. of India, BPL census 2011, piloting in 4 villages of 4 districts of Jharkhand was shortlisted by Govt. of Jharkhand, project helped in identifying suitable agency (XISS, Ranchi) to conduct BPL survey as per guidelines of MoRD, Gol. Project team is facilitating and monitoring the BPL survey assignment on behalf of RDD, Govt. of Jharkhand.
- Need based support provided for strengthening of newly established RSETI across Jharkhand by project through a consultative and sharing workshop in the month of June 2010.
- Shortlisted agencies for multistate special SGSY project by Govt. of India were invited by JSLPS for a progress review meeting.
- For revival of lac cultivation a demonstration cum action research organized with 200 farmers of Palamau district in collaboration with IINRG (previously known as ILRI).
- Similarly for scaling up of drip irrigation based vegetable cultivation model, technical collaboration was established with HARP, Palandu and Birsa Agriculture University, Ranchi and for mainstreaming as a bankable scheme support of NABARD, Bank of India and other commercial banks & their RSETIs were taken.
- As new society for watershed program implementation has been established by Govt. of Jharkhand, hence project is technically supporting to build the capacity of the State Level Nodal Agency for Watershed Program Implementation through WASSAN consortium consisting of PRADAN & CINNI.

3.4. PROJECT OUTPUT 4

Project Monitoring, Evaluation & Capacity Development

Key Achievement

- **Baseline study was conducted by Sutra Consulting Pvt. Ltd.,**
 - To establish a baseline information on project outcome and evaluation indicators which can be measured on subsequent studies to understand the impact of the project

- To create a baseline information on project area which can assist the implementation team in planning and executing project interventions
 - Understand the baseline well being and livelihood status of project districts and current interventions in place for livelihood improvement
 - Understand opinion of various stakeholders including government, Non Government Institutions, training institutes and village leaders for need and appropriateness of various livelihood improvement and skill development strategies
- **Web enabled MIS development for Project**
 - To ensure participation of all key stakeholders of project, develop application in module manner and implement a comprehensive computerized and web-enabled “Management Information System” (MIS) product for JSLPS a selection process was followed and Microware computing private limited has been selected as the MIS development agency for the project. The main objective of MIS is to help in tracking and managing project activities in such a way that support Project Management and other stakeholders to take appropriate decision on time.
- **Training of Trainers (ToT) on Micro plan development, livelihood analysis, SHG-Federations**
 - A five day training program was organized on microplan preparation techniques with help of SAMARTHAN, Bhopal for all SMA and JSLPS district and block team members. A framework was finalized after due consultation with stakeholders for microplan preparation. Subsequently these trained person imparted training to a total 712 volunteers, NGO staff, and community leaders at village level for preparing microplans across the project area.
 - Similarly, for analyzing the livelihood pattern of villagers a 5 day ToT was organized with help of BASIX Livelihood School, Hyderabad for NGO Staff and JSLPS district and block team members.
 - Training on formation of SHGs, village organisation and Federations was conducted at Gaya with help of APMAS, Hyderabad. This was participated by total 48 person from the project, SMAs, TSAs and NABARD. They were also exposed Bihar Rural Livelihood Project to understand the functionality of group formation and credit flow and management on a project mode.
 - State and district team members of project visited different livelihood projects like SERP-AP, WORLP-Orissa, TRUPTI-Orissa, BRLP-Bihar, and training and research institutes like NIRD-Hyderabad, for attending different training and workshops related to BPL Piloting and NRLM (national rural livelihood mission) policy guideline formulation consultation, MIS design etc. Also few joined training program on credit aspects in rural development at NABARD’s training in BIRD- Lucknow.

4. PHYSICAL PROGRESS

4.1. AGRICULTURE

System of Rice Intensification (SRI)

- For enhancement food security and increase in productivity, a package of Rice and Wheat Intensification were introduced among the farmers of Ranchi, Pakur W. Singhbhum districts of the



project. The System of rice intensification is a tested technology already experimented in last UNDP Social Mobilization Project.

- At W. Singhbhum district organic method of SRI was introduced for the first time with tribal farmers. They were initially taken on exposure visit to Khunti district where PRADAN had demonstrated the technology earlier. A Film on SRI by Mr. Meghna Bhattacharya and SAMBHAV organization was exhibited in different

villages to create awareness on package of practices associated with SRI. With help of KGVK hand operated manual weeder was introduced to check the growth of weeds and create compost in the SRI Fields. Also Dhanicha seeds as a green manure crop preceding to SRI crop was introduced successfully with these farmers. In Pakur & Palamau district large scale replication of successful SRI demonstrations was attempted by SMAs.(NBJK and SPWD) but long drought spells hinder the growth of SRI plots. At Hazaribagh & Ranchi district patches of SRI cultivation continued with support of PRADAN and GVT respectively but mixed response were observed for long drought spells.

- Introduction of SRI and SWI package of practices has reached to 2000 poor farmers of project area.

Demonstration of Poly House Technology for Healthy Seedling Raising

- To cater the requirement of quality seedlings to farmers, two poly houses were established in Ranchi District. by GVT and KSRA promoted Self Help Groups. Seedlings of Tomato, Brinjal, Cauliflower and other raised in the poly house were sold by SHG members to others farmers at a premium price.
- Similarly, a poly house was also established by NBJK with help of a five SHG members to cater the need of 25 farmers of Janum village of Angara block of Ranchi district associated with drip irrigation based vegetable cultivation. This poly house nursery supplied 40 thousand saplings every month grown on soil less medium i.e. coco pit and vermi compost on plastic tray. In addition, this poly house also supplied healthy seedlings of Tomato, Cauliflower, Cabbage, Chili and Cucumber to nearby farmers of Jeetu village under SGSY scheme.

- The tomato crop undertaken by 25 farmers of Angara Block in Ranchi has earned Rs. 20-40 thousand to each farmer.

Seed Production and Multiplication Program

- A batch of 30 farmers was trained in seed production technology and seed multiplication in Ranchi district and all the farmers adopted this.
- 700 farmers were trained to utilize fallow land for second crop after rice cultivation. The farmers were benefitted immensely by sowing second crops like, Mustered, Pea, Mung, Paddy, Wheat etc. On an average, each farmer was gained an aggregate monetary benefit of ranging from Rs. 4200 to Rs. 6000 in one cropping season.
- Furthermore, a total of 798 farmers received training on vegetable cultivation and floriculture.

4.2. SELF- HELP GROUP: FORMATION/STRENGTHEN

Formation of New SHGs

For social mobilization and collectivization project has taken steps for organizing Women Self Help Groups across the project area with help of social mobilizing agency. In the five project districts 431 new SHGs were formed with 5568 women members, in addition to the existing 474 old SHGs comprising 6173 members. Steps were taken by project to improve the functionality of old SHGs by imparting training on book keeping, record maintenance and adopting five principles of micro finance. Due to active support and co-ordination by project team, SHGs have been allocated Public Distribution Shops (PDS) by district administration. In Hazaribagh and Ranchi district, project assisted in formation of federations of SHGs.

Support to SHGs

Project team facilitated to receive Rs. 4.74 cr. as one time grant of Rs. 10000/- as revolving fund to each group provided by Rural Development Department, Govt. of Jharkhand This was given to one year old SHGs for initiating internal credit and small enterprise based livelihood options.

Training for old and new SHGs Convened

- The members of both new and old SHGs were trained in financial management, leadership and operational issues by organizing seven training camps where a total of 410 members were trained .Among them 95% trained members were women only



- Training on formation of SHGs and Federations with technical support of APMAS in Gaya has been conducted and a total

no. of 48 person from the project, SMAs, TSA,s and NABARD were oriented through this training program.

Exposure Visits for SHGs

- A total number of 80 farmers from 7 SHGs of W. Singhbhum went for exposure visit in PRADAN' project area in Khuti district for SRI. After return of the exposure trip farmers adopted SRI Technique in their respective fields.
- Two SHGs from W. Singhbhum went to Mayurbhanj, Orissa for an exposure on value chain of NTFP based livelihood options. They were exposed on techniques associated with Leaf plates and cup making devices and their functional aspects as well as economics.
- Also from Ranchi district 60 members of Farmers Field School went for an exposure on Wadi model of promoted by Gramin Vikas Trust, Ranchi.
- Similarly, In Hazaribagh district 350 farmers went on exposure visits to see SRI and tomato cultivation within district.

4.3. VEGETABLE CULTIVATION BASED DRIP IRRIGATION SYSTEM

To establish a fully functional drip irrigation based vegetable cultivation project demonstrated a model of micro-drip irrigation at Janum Village of Angara Block District Ranchi. The objective of this demonstration was to

- Demonstrate a regular income mechanism for 'Enabling Rural Poor to Overcome Poverty.'
- Empowering women to access new agriculture technology and adopt new practices for a regular income source for family.

Out Come

- Increased farm productivity of participating farmers and an annual income generation of more than Rs. 50,000 per 1000sq.m of cultivation area.
- Increased local employment opportunities in on-farm and off-farm activities leading to reduce distress migration
- Increased livelihood options to participant families (>2 options per family).
- Inclusion in basic banking facility to build a capital base for self and family.

Institutional Arrangement for Demonstration:

- There was a technical agency for technology demonstration with 25 farmers of Janum Village and each one having a 0.25 acre land for vegetable cultivation. This technical and handholding support to farmers continued for one year.

- Project team closely monitored & supported entire field level operation including farmer mobilization, organising Farmer's Club and opening their bank account for functional autonomy.

Achievement



- 25 brick kiln workers who were previously farmers but lost the hope of income opportunity through agriculture based livelihood option, were again back to their agriculture field and earned Rs. 25-40 thousand from a single tomato crop in summer season.

- Farmers from nearby villages, other block and districts came on exposure trips to these farmers and they were successfully convinced to

initiate same practices under SGSY financial support.

- Several government officials including Development Commissioners, DDCs, Director-RSETIs, LDMs, NABARD officials, senior administrators from state government as well as officials from Government of India visited demonstration site and interacted with farmers on their change in life and life style.
- Rural Development Department, Government of Jharkhand agreed to scale up this technology based livelihood options with 100,000 farmers across the state with financial support of Govt. of India and JICA. A proposal has been submitted to DEA, Govt. of India for necessary financial support.
- Rural Development Department Government of Jharkhand formulated a bankable scheme with help of NABARD for small and marginal farmers having at least 0.25 acre of land and irrigation source. This initiative will be supported as a special scheme under SGSY program for 50% subsidy and a special provision of capacity building fund was also made available for handholding the farmers.

4.4. LIVELIHOODS ORIENTATION TRAINING FOR STAKEHOLDERS COMPLETED BY BASIX

A three-day orientation Training program was organized for the JSLPS project functionaries as well as partner SMAs and TSAs. A total of 36 participants were trained in different paradigms of livelihoods and it's context and approaches .The objectives of the orientation training program were to build an understanding of the conceptual & promotional aspects of livelihoods, prospects and challenges of different livelihood promotion models.

4.5. GRAMSABHAS AND VILLAGE DEVELOPMENT COMMITTEE ARE RE-ENERGIZED

The project envisages on strengthening village level institutions, 286 Village Development Committee (VDC) formed. Each VDC has been given proper representation of women as well socially deprived communities, members have been reoriented to issues of livelihood as well other aspects of village development.

4.6. FARMERS GROUPS

Farmers are organized into groups to enhance their livelihoods and marketing of produces. 112 farmer groups organized in different project villages. They were exposed to new agricultural practices and new technologies through farmer field schools by GVT, KSRA, PRADAN, SPWD and NBJK.

Training to Farmers Groups

As many as 36 farmers groups were imparted training in water management, crop management, improved seeds and other related issues. It comprised a total of 552 members at Ranchi district. As a follow up, they were exposed to double cropping and seed management.

4.7. FOREST RIGHTS COMMITTEE

On recently declared the Forest Rights Act 2006, a special drive on dissemination of FRA 2006 was launched in 50 villages in W. Singhbhum and Palamu districts. A total of 44 Forest Rights Committee formed across the project districts are facilitating villagers in submitting application for getting Patta (Land Right Document). The committee also helped villagers in protecting the forest and managing other livelihood issues.

Training on Forest Rights Act 2006

Two trainings were organized on Forest Right Act-2006 (FRA) & Livelihood Promotion by Institute for Community forest Governance (ICFG) at Tribal Research and Training Centre (TRTC), Chaibasa, W. Singhbhum. The objective of training was to enhance awareness on FRA-2006, to understand the process and procedure for claiming Community Property Resources and Community Forest Management. A total of 125 participants benefitted from this training program.

4.8. MICRO-PLAN

State level training on Micro Planning

A Four days micro planning ToT was organized for the project staff, SMAs to initiate the village level micro plan. 38 participants from SMA, TSA and Project team attended the training.

Village level Training & Preparation of Micro Plans



As a follow up, four block level trainings organized for 33 members of SMAs and volunteers. The trained participants formulated 298 micro plans with following necessary PRA exercises which include social mapping, resource mapping, well being ranking, geographical transacts

5. FINANCIAL PROGRESS

5.1. BUDGET

Project Budget - USD 25,00,000

Year	Budget in USD
2009	720,884
2010	899,975
2011 & 2012	879,141

5.2. FINANCIAL PROGRESS

Total Expenditure - INR (as on Nov'2010)

Year	Expenditure Rs. in lac
2009	113,859
2010 (Nov'2010)	327,872

6. PICTURE GALLERY



Gallery -1



Picture-1: Demonstration of Drip System

Picture-2: Farmer with cash crops/earning @25-30k/month

Picture-3: Demonstration of Poly Nursery

Picture-4: Kuroiler Poultry Unit with 26 farmers, earning 4k/farmer

Picture-5: Demonstration of System of Rice Intensification



Gallery -2



- Picture-1: Preparation of Micro plans through PRA exercise
- Picture-2: Training of Village Development Committee Members
- Picture-3: Enabling access of information at community level
- Picture-4: Collective marketing of Tamarind
- Picture-5: Promotion weigh scales at village level to prevent cheating in sale of NTFP products



Gallery -3



Picture-1: Raising of Nursery by Community

Picture-2: Pisciculture demonstration

Picture-3: Introducing low cost oil expellers in 6 Villages

Picture-4: Awareness through Gram Sabha meetings

Picture-5: Convergence through govt. schemes (wages under NREGS)